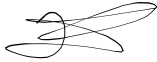


## CATERPILLAR 325 2D

### Major Service

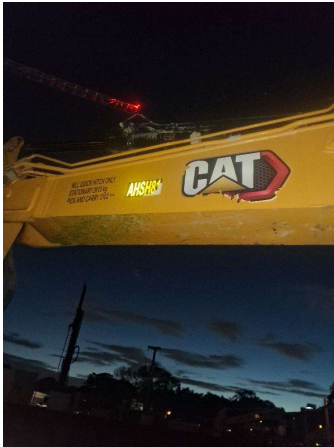
● 0 ● 18 ● 82 ● 7

Inspection Number	RP057933	Customer No	104917
Serial Number	TEL00686	Customer Name	ENVIROPACIFIC SERVICES LIMITED
Make	CATERPILLAR	Customer Email	payments@enviropacific.com.au
Model	CAT325 2D	Works Order	RP057933
Equipment Family	22.6-26T HYDRAULIC EXCAVATOR	Completed On	15/05/2026 6:42:16 PM
Asset ID	AHSH81	Inspector	Jake Raffen
Location	ENVIROPACIFIC SERVICES LIMITED 893 Bourke Street Waterloo NSW 2017	PDF Generated On	15/05/2026
		Machine Hours	6903
Customer		Next Meter	7000

### General Info & Comments

● **General Info/Comments**

500hr service



## TASK SAFETY INSTRUCTIONS

- |  |        |
|--|--------|
| ● 1.1 Wear Correct PPE at all times  | NORMAL |
| ● 1.2 All isolation and safe work procedures must be followed                      | NORMAL |
| ● 1.3 Identify task hazards and controls utilising hierarchy or controls model     | NORMAL |
| ● 1.4 Ensure a competent operator and spotter is utilised to move mobile equipment | NORMAL |
| ● 1.5 Ensure all mobile equipment is fundamentally stable                          | NORMAL |
| ● 1.6 Ensure three points of contact is maintained during access and egress        | NORMAL |
| ● 1.7 Ensure acceptable housekeeping standards are maintained at all times         | NORMAL |

## MACHINE GENERAL RUNNINGCHECKS

●	2.1 Check all work lights, beacon & reverse alarm for operation	PASS
●	2.2 Test all dash warning lights, gauges and audible alarms for correct operation	PASS
●	2.3 Check idle timer for correct shut down operation	N/A
●	2.4 Check operation of all three emergency stop buttons	PASS
●	2.5 Check operation of horn	PASS
●	2.6 Check operation of reverse camera	PASS
●	2.7 Check alternator charge voltage	PASS
●	2.8 Check operation of auto grease system by manually activating timer	N/A
●	2.9 Check fire system control panel for 'Normal'	N/A

#### PM FIRE SUPPRESSION SYSTEM

●	5.1 Ensure fire suppression bottle and components are securely mounted and in good condition	N/A
●	5.2 Ensure fire suppression is correctly charged	N/A
●	5.3 Inspect last charge date	DATE:2026-05-15 T00:00:00.000000 0
●	5.4 Check all fire extinguishers are securely mounted and in good condition	PASS
●	5.5 Check all fire extinguishers are correctly charged	PASS
●	5.6 Inspect last charge date	DATE:2026-05-15 T00:00:00.000000 0

#### PM ENGINE

●	6.1 Perform engine valve set	N/A
●	6.2 Inspect air intake system hoses, pipes, clamps for signs of dirt ingress	PASS
●	6.3 Inspect engine for oil or fuel leaks	PASS
●	6.4 Inspect engine components for missing clamps	PASS

● 6.5 Inspect exhaust system for signs of leaks, loose bolts or missing clamps	PASS
● 6.6 Inspect turbo for security and signs of leaks	PASS
● 6.7 Inspect condition of exhaust lagging	PASS
● 6.8 Inspect engine mounts for condition and loose hardware	PASS
● 6.9 Inspect alternator mount condition and adjustment	PASS
● 6.10 Inspect wiring condition and security	PASS
● 6.11 Inspect engine belts	PASS

#### PM ENGINE COOLING SYSTEM

● 7.1 Check coolant level	PASS
● 7.2 Check condition of radiator cap	PASS
● 7.3 Check condition of radiator core	PASS
● 7.4 Check cooling system for signs of leaks	PASS
● 7.5 Check hose and clamp condition	PASS
● 7.6 Inspect fan condition and operation	PASS
● 7.7 Inspect radiator and fan guard condition	PASS

#### PM SWING TRANSMISSION

● 8.1 Inspect swing transmission for signs of leaks	PASS
● 8.2 Inspect swing transmission oil level	PASS

#### PM HYDRAULIC SYSTEM

● 9.1 Check hydraulic oil level	PASS
● 9.2 Inspect hydraulic cylinders for leaks and security	PASS
● 9.3 Inspect hydraulic hoses for leaks, damage, security	PASS
● 9.4 Inspect hydraulic pump condition, leaks, security	PASS

● 9.5 Check Pilot Accumulator operation as per OEM Maintenance Procedure - Test Boom Down Functionality with engine off *PASS*

**PM FINAL DRIVES**

● 10.1 Inspect LHS final drive mount condition for leaks and security *PASS*

● 10.2 Inspect LHS oil level and mag plug condition *PASS*

● 10.3 Inspect RHS final drive mount condition for leaks and security *PASS*

● 10.4 Inspect RHS oil level and mag plug condition *PASS*

**PM UNDERCARRIAGE**

● 11.1 Inspect LHS track tension *PASS*

● 11.2 Inspect RHS track tension *PASS*

● 11.3 Inspect tracks for loose/missing bolts *PASS*

● 11.4 Inspect load and carrier rollers for signs of leaks *MONITOR*

● 11.5 Inspect idlers for signs of leaks *MONITOR*

● 11.6 Inspect sprocket segments condition *MONITOR*

● 11.7 Inspect track frame for cracks, lose or missing hardware *MONITOR*

**PM FRAME AND BODY**

● 12.1 Check panels for damage and security *MONITOR*

● 12.2 Check access steps and walkway condition *PASS*

● 12.3 Inspect boom condition – cracks, missing clamps, damaged pipes, excessive movement, lubrication *PASS*

● 12.4 Inspect stick condition – cracks, missing clamps, damaged pipes, excessive movement, lubrication *PASS*

● 12.5 Inspect quick hitch condition and operation *PASS*

● 12.6 Inspect bucket condition – cracks, wear, damage, mounts *PASS*

● 12.7 Inspect GET condition and hardware *PASS*

#### PM ELECTRICAL SYSTEM

<input checked="" type="radio"/>	13.1 Check battery condition	PASS
<input checked="" type="radio"/>	13.2 Check battery terminal condition	PASS
<input checked="" type="radio"/>	13.3 Check battery security	PASS
<input checked="" type="radio"/>	13.4 Check battery box drain is clear	PASS
<input checked="" type="radio"/>	13.5 Check wiring condition and security	PASS

#### PM GREASE SYSTEM

<input checked="" type="radio"/>	14.1 Check all points for acceptable lubrication	PASS
<input checked="" type="radio"/>	14.2 Inspect grease system operation	PASS
<input checked="" type="radio"/>	14.3 Check grease line condition	PASS
<input type="radio"/>	14.4 Refill grease tank	N/A
<input checked="" type="radio"/>	14.5 Lubricate bucket linkage	PASS
<input checked="" type="radio"/>	14.6 Lubricate blade linkage	PASS
<input checked="" type="radio"/>	14.7 Lubricate boom & stick linkage	PASS
<input checked="" type="radio"/>	14.8 Lubricate swing bearing	PASS

#### PM OPERATOR STATION

<input checked="" type="radio"/>	15.1 Check all doors for correct opening and closing adjustments and operation	PASS
<input checked="" type="radio"/>	15.2 Inspect condition of door seals	PASS
<input checked="" type="radio"/>	15.3 Check window glass and seal condition	PASS
<input checked="" type="radio"/>	15.4 Check mirror condition and adjustments	PASS
<input checked="" type="radio"/>	15.5 Fill window washer reservoir	PASS
<input checked="" type="radio"/>	15.6 Inspect air con vents condition	PASS
<input checked="" type="radio"/>	15.7 Inspect seat belt and mounting hardware	PASS

● 15.8 Inspect seat condition, operation and mounting PASS

● 15.9 Replace cabin A/C filter PASS

**OIL SAMPLING**

● 16.1 Engine NORMAL

**PM POST SERVICE INSPECTION CHECKS**

● 17.1 All inspections have been completed and rectified as required NORMAL

● 17.2 All safety related defects have been repaired or reported NORMAL

● 17.3 All defects have been noted and reported NORMAL

● 17.4 All fluids are at correct level and drain plugs tight NORMAL

● 17.5 All oil samples have visually been inspected and any notable signs of contamination have been reported NORMAL

● 17.6 All replaced filters have been cut and inspected and photos added to CAT Inspect and reported to supervisor NORMAL

● 17.7 Machine has been recommissioned and ready for operation NORMAL

● 17.8 PM service notification marked off in Vision Link NORMAL

**DEFECTS IDENTIFIED**

● 18.1 DEFECTS IDENTIFIED *undercarriage require attention. grade system active faults. repaired engine oil leaked from drain cock.*

**OIL USED**

● 19.1 Hydraulic oil 0

● 19.2 Engine oil 15

● 19.3 Slew oil 0

● 19.4 Gear oil 0

---

● 19.5 Coolant 0

---

● Site photo

---

● Site photo

---

● Site photo

---

● Site photo

---

● Site photo

---

● Site photo